

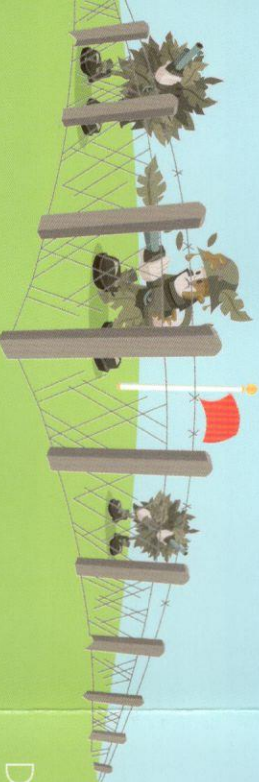
MINISTRY OF DEFENCE (MOD) - WARNING SIGNS

MOD land is usually clearly marked, and at certain times, can be off limits as military training may be taking place.

When red flags are flying, you must keep out. There are plenty of other areas you can visit without risking harm to you and your dog.

When the flags are down you are free to use the paths on MOD land.

Be sure to bag and bin dog poo on MOD land – soldiers will crouch, crawl and roll on the ground during training exercises. By sharing this space responsibly, we can keep the land open for future generations to enjoy.



TICKS – PROTECT YOUR PETS FROM PARASITES

Ticks can cause disease by transmitting bacteria and microbes when they bite an animal or human.

Ticks are common in woodland, grassland and heathland areas.

Stick to paths to reduce your chances of picking up ticks.

Check your dog and yourself for ticks after a walk.

Remove any ticks quickly by twisting them off – make sure the head is not left behind.



CANINE CONFESSIONS

Watch our Canine Confessions films to see how our four-legged friends have seen the error of their ways and now take the lead!

southdowns.gov.uk/takethelead



PHOTO COMPETITION

Enter our monthly #TakeTheLead photo competition between March and September to be in with a chance of winning some yummy Arden Grange goodies for your pooch!

Visit southdowns.gov.uk/takethelead for full details.

DISCOVER ANOTHER WAY

For information on public transport to and around the South Downs National Park visit southdowns.gov.uk/discovery-map, traveline: info or call 0871 200 22 33. For train timetables visit nationalrail.co.uk or call 03457 48 49 50.

CONTACT

South Downs National Park Authority: 01730 814810



/SDNPA



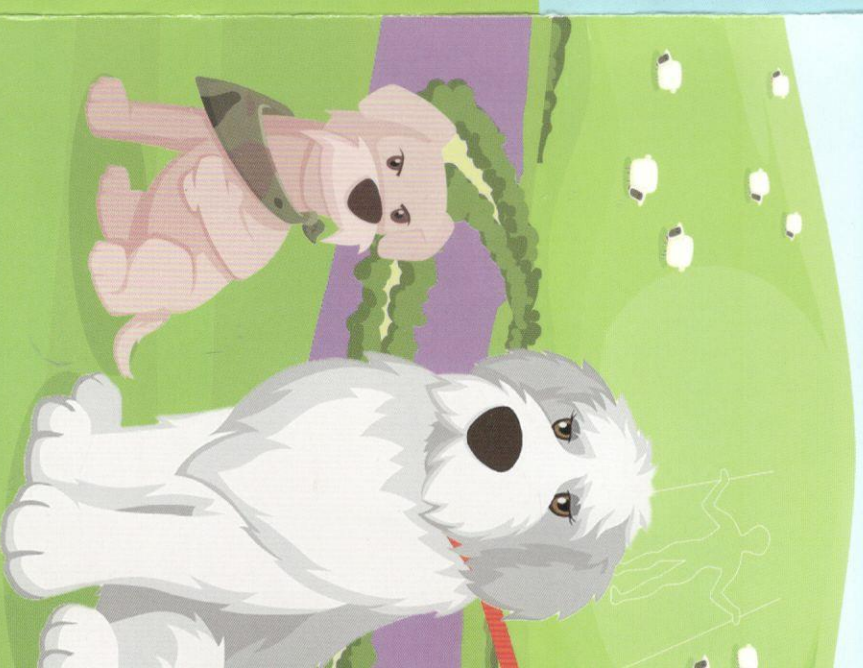
@SDNPA



SOUTHDOWNSNP

SOUTHDOWNSNP.GOV.UK

TAKE THE LEAD IN THE SOUTH DOWNS



SOUTH DOWN
NATIONAL PAR



Heathlands
Reunited



heritage
lottery fund

LOTTERY FUNDED



ARDEN GRANGE™

nutrition without compromise